

# Product Portfolio



## Portable moisture

Reel moisture profiles, running or static

On-line moisture

Reel moisture profiles, running and static

Surface and deep moisture

CIE colour plus other colour variables

## Pulp quality and moisture

Packaging papers

Corrugated

Black papers

Wood and peat

Soil and animal feed

Special papers

**NEW MODELS**

2023-20-135

**VISILAB**  
SIGNAL TECHNOLOGIES

**FrontColour™** is a registered trademark of Visilab and **IRMA-7™** is a trademark of Visilab. All rights reserved. Copyright©by Visilab. The manufacturer reserves right to make changes to pricing, documentation, specifications and features without advance information. Copying of this document is prohibited in any form whatsoever.

Manufacturer:

**Visilab Signal Technologies Oy**

Sepäntie 4, Monninkylä FI-07230,

Askola, Finland

Tel. +358-45-6354885

[www.visilab.fi](http://www.visilab.fi)

[sales@visilab.fi](mailto:sales@visilab.fi)

Contact nearest representative for prices and availability. If unknown, contact Visilab directly

# FAMILY OF UNIQUE SENSORS FOR INDUSTRIAL APPLICATIONS

---

NEW PRODUCTS

NEW FEATURES

## Contents

Moisture - AK30 - Handheld Moisture Meter .....	3
Moisture - MK30R - Handheld Moisture Meter for Thick Materials .....	6
Moisture - MK30LP - On-line Moisture Meter for Thick Materials.....	9
Moisture - AK40 - On-Line Moisture Meter.....	11
Moisture - AK50 - Process Moisture Meter .....	13
<b>FrontColour10 - On-line Colour Meter.....</b>	<b>15</b>
Software - Data Logging for Process Sensors .....	18
Accessories - for Process Sensors .....	22

---

PLEASE NOTE: ALTHOUGH NEW MODELS EMERGE OCCASIONALLY AND OLD MODELS ARE TAKEN OUT OF PRODUCTION, WE OFFER FULL SUPPORT FOR ALL SENSORS WE HAVE EVER MADE. CONTACT US FOR SERVICING, CHECKUP AND UPGRADING OPTIONS. WE ALSO GIVE A DISCOUNT FOR VINTAGE INSTRUMENTS RETURNED TO US WHEN BUYING A NEW ONE.



# Moisture - AK30 - Handheld Moisture Meter

The model AK30 portable moisture meter offers unique features for field and laboratory use. It uses advanced Infrared technology and signal processing to get best results in noise level and stability. It is handy in daily portable use and invaluable while traveling to mills abroad.



*Our best-selling product ever!*

Surface moisture

- NEW
- SIMPLE TO USE
- TREND CURVES DISPLAYED
- SMALL AND HANDY
- THIS METER HAS NO COMPETITION

## PRODUCT HIGHLIGHTS

- applications in paper and board industry, textiles, felts, filters, minerals, sawdust, recycled fiber, waste paper, bio fuels
- surface moisture in thick samples, total moisture content in thin samples (abt. 150 micron penetration in paper products)
- fully portable and stand-alone, this is an easy to travel companion, no wire tangles
- simple to use
- a separate Start button to facilitate use in difficult conditions when acquiring data to memory
- fast response, selectable digital filtering, 5 points per second sampling
- superior stability, based on proven technology by Visilab
- operating distance: 0...7 mm or more, no contact required
- measuring area 10 mm in diameter allows for studies in small scale

- IP67 enclosure for harsh environments
- integral display and a diaphragm keyboard
- large calibration table library (100 tables) with rapid switching
- calibration with multiple points for linearization (2 - 10 points)
- one filter option is adjustable for exceptionally slow responses when measuring conveyors and like
- Flash calibration in field conditions, just know the BW and start measuring
- automatic zeroing of the moisture reading if only the difference is important
- dry weight percent can be taken into use while measuring
- nonvolatile memory banks for holding 820 sample data series, with max 500 points per series
- autotimer sampling, statistics of values and curves displayed
- graphic trend display for recent history, data can be saved to a bank with a button press
- graphics show also retrieved data curves
- optical head is inside the box giving a good protection
- has a **PUSWIDE** skid for measuring safely over moving webs and running rolls, suitable also for corrugated and soft materials
- the old regular skid and PUS are still available while stocks last
- an optional carrying case for industrial conditions, **-CAR**. It is shockproof and water tight
- banks can be averaged several at a time, the number of banks selected can be set for that
- large moisture range starting from 0 %, up to about 70 %
- five recipes of which one is selected to use and attached to memory banks when data is saved. The pertinent label is used in the PC programs for naming the resulting files with the original time stamp
- large numeric display
- a graphic display, trend curve and values, switchable with the numeric display
- colour hue of display can be adjusted for various operating modes
- colour hue of display can be adjusted to indicate crossing preset moisture levels (alarm feature)
- a marker key allows adding moisture markers while doing moisture testing on-line
- low noise level (typically < 0.02 % stddev)
- wireless communication via Bluetooth for up to 100 m distance in good conditions, also a 100 m PC Bluetooth adapter included with software. Now we are shipping a new RN41-based system which is a snap to install and use
- regular RS232 at 115 200 bauds is also available for PC's COM port. Settable for 9600 bauds too.
- the no-cost **AK30**, **AK30Mini** and **ATOM** programs are full data acquisition software for trend display, data archiving, manipulation, frequency analysis, etc. **AK30Mini** suits small laptops with a reduced set of features. **Advanced** is an optional licensed program with plenty of features
- an operating period of at least 3.5 to 4 hours before recharging the battery, charge indicator LEDs
- an optional dual-battery, **-DBAT** is available at low cost offering 7 hours of continuous usage
- very long service interval of 12 000 hours
- battery charger 110 - 240 VAC is included
- dimensions 180x80x100 mm, weight 500 g
- the price is very competitive and the payback time is usually short

The PUSWIDE skid

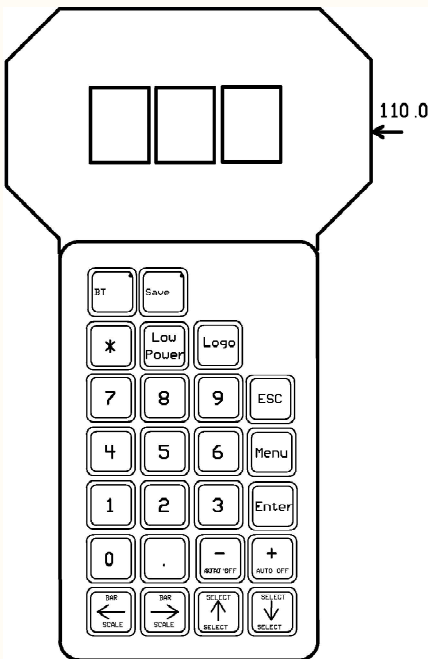




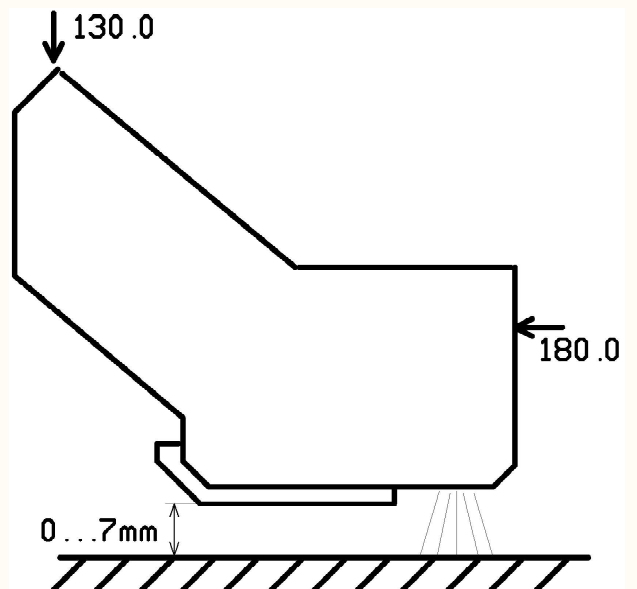


The smaller skid -PUS option

The carrying case, -CAR option



Mechanical dimensions of AK30, not to scale



# Moisture - MK30R - Handheld Moisture Meter for Thick Materials

The model MK30R portable moisture meter offers unique features for field and laboratory use. It uses advanced UHF radio wave technology and signal processing to get best results in noise level and stability. It is optimized for measuring thick materials, like pulp, wood, soil, textiles and is handy in daily portable use and invaluable while traveling to mills abroad.



- SIMPLE TO USE
- TREND CURVES DISPLAYED
- PENETRATES TO 30 mm
- ABLE TO MEASURE VERY HIGH MOISTURES
- THIS METER HAS NO COMPETITION

## PRODUCT HIGHLIGHTS

- applications in pulp, paper and board, textiles, felts, filters, recycled fiber, biofuels with fine particles, packaging papers, animal feed, peat, soil, minerals, wood, sawdust etc.
- suitable also for **corrugated** and **soft materials** and works for **reels** too
- unbeatable for **black papers**, capable of measuring **plastic plate thickness**
- moisture of thick and thin samples, moisture content in % (abt. **30 mm penetration in common materials**)
- wide moisture range starting from about 0.5 %, up to about 99 % depending on BW, up to 8 000 g/m<sup>2</sup> water
- fully portable and stand-alone, an easy-to travel companion, no wire tangles
- fast response, selectable digital filtering, 3 or 6 points per sec sampling
- superior stability, based on radio frequency technologies (UHF)
- the price is very competitive and the payback time is usually short
- wireless data transfer

## Data logging features

- operating distance: **contact required**
- measuring area 40 mm in diameter, **measuring depth to 30 mm**

- nonvolatile memory banks for holding up to 820 data series with time stamp and bank number
- each bank can contain up to 500 samples
- banks can be downloaded to a PC with the original time stamp and a selectable text label, affecting directly the resulting filename too
- banks remain for years, unless erased
- graphic trend display for recent history
- the current trend display can be saved to a new bank with a button press
- for measuring profiles of static reels there is an integral distance sensor for synchronizing measurement. The measurement is started with the button on the front panel
- autotimer sampling (adjustable sampling interval from 0.2 s and batch size 1 - 500), start with either the "+"-key or with a separate button on the front panel
- statistics of collected values
- statistics can be calculated either from one series or of a preset number of series. This allows for averaging of sides of a large pulp bale
- low noise level even at high moistures
- a skid for measuring safely over moving webs and running rolls. It also ensures proper contact while measuring soft materials having a low-friction skid leaving no streaks, no ripping
- measurement modes: DRY / WET for water content range for optimum results
- water content in % total, a calibration available giving g/m<sup>2</sup> independent on BW
- calibration with multiple points for linearization (2 - 10 points)
- precalibrated for some basic materials
- five quick switching recipes for starting new measurements at regular QC positions. Calibration table and a label can be selected for each recipe
- marker key for marking a part of data series acquired
- **Note:** Does not operate for materials containing significant amounts of soot, metal particles or Titanium oxide pigment. Small amounts of soot may be acceptable.

### Interfaces and physical properties

- an integral display and a diaphragm keyboard
- large numeric display and a graphic display, trend curve and values
- colour hue is associated with crossing preset moisture levels, high or low (alarm feature)
- charge indicator LEDs
- battery-backed clock for time stamping
- dimensions 260x178x139 mm, weighs 1900 g
- IP65 enclosure for harsh environments
- an operating period of at least 8 hours before recharging the battery.
- battery charger for 110 - 240 VAC mains is included
- wireless communication via 100 meter Bluetooth, the Bluetooth adapter for the PC included
- the free **ATOM**, **AK30** and **AK30Mini** programs are data acquisition software for trend display, data archiving, manipulation etc. **ATOM** has less features. **Advanced** is an optional licensed program with plenty of features.
- meter configuration can be saved, meter starts the next session like that. Temporary changes are not saved.
- calibration tables can be saved after modification, user decides if necessary
- **MK30R** can be temporarily mounted as an online meter touching a running web with an accessory kit. Then it is able to deliver both wireless data and can be connected to a DCS via 5 Volt / 4-20 mA analog signals

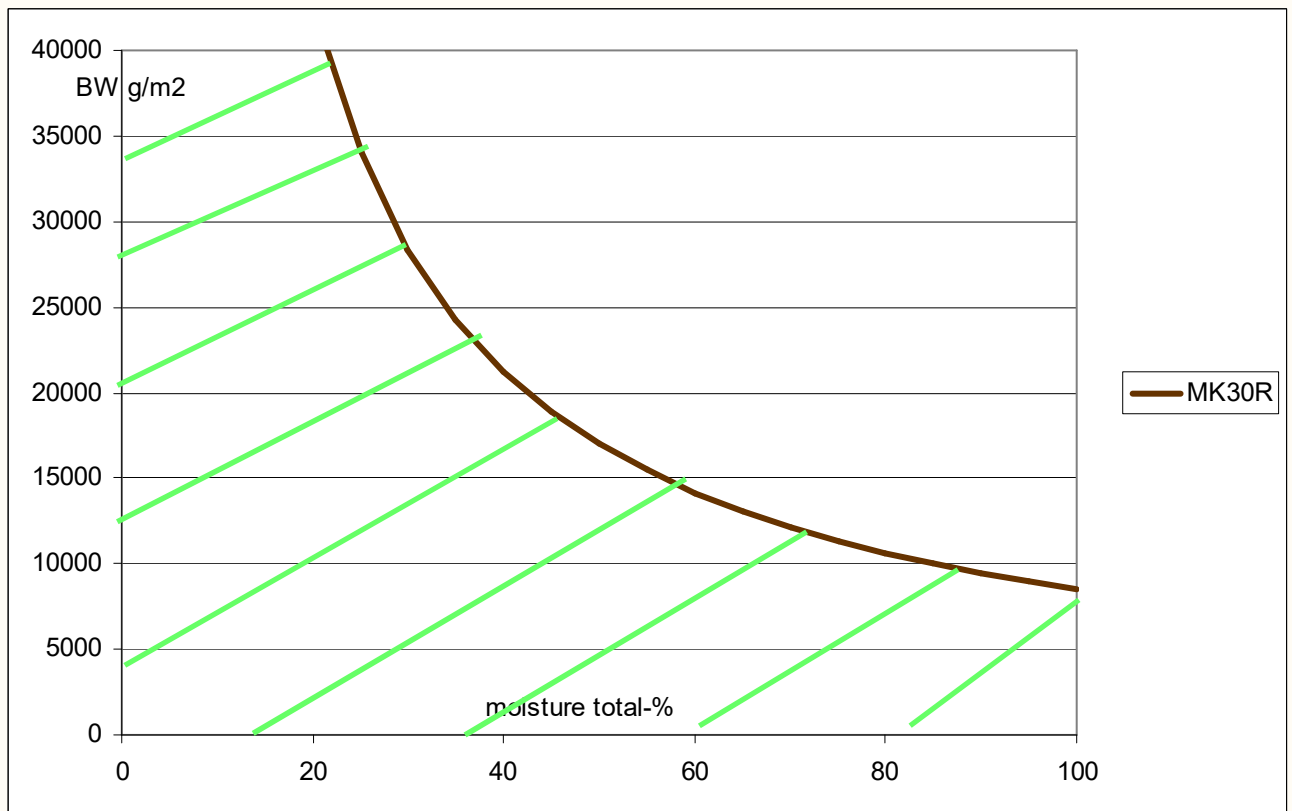
### Ambient conditions

- operating +5 ... +40 C (+55 C shortly)
- fully temperature compensated
- IP65 case
- sensing surface can be cleaned if dirt accumulated
- power and clock batteries are replaced every 5 to 7 years





## Approximate safe operating region for MK30R



### Options

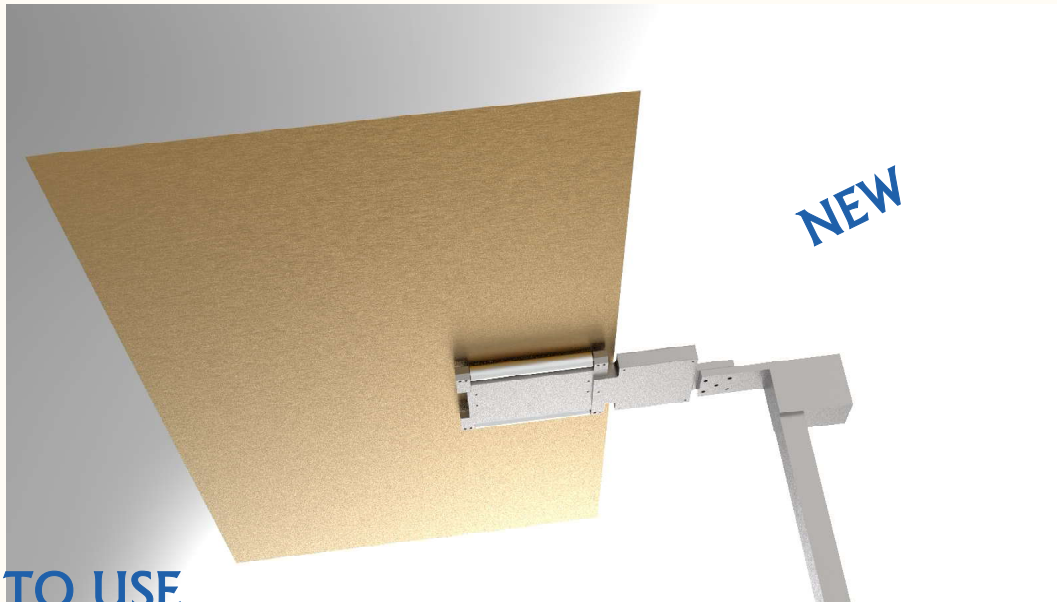
- -**CARMK** a special carrying case, water tight, shock-proof
- -**MKSTD** a polymer plate for verifying the calibration in long-term use (any stable plastic will do)
- **MK30R-PF** for paper form manual measurements. The separate sensing head allows for getting into tight places
- **MK30R-RM** for paper and pulp measurements. The separate flat sensing head at the end of a stick makes on-line measurements possible of running webs and reels
- - **Sample holder** for cylindrical and tubular material for laboratory QC testing
- - moisture standards of polymer

A special version **MK30 Sample Holder** for measuring filled and hollow production materials for QC



# Moisture - MK30LP - On-line Moisture Meter for Thick Materials

The model **MK30LP** moisture meter offers unique features for on-line and laboratory use. It is only 15 mm thick and fits to many tight places. It uses advanced UHF radio wave technology and signal processing to get best results in noise level and stability. It is optimized for measuring thick materials, like pulp. It is targeted mainly for pilot machines and research instruments studying coating, drying and glueing



- **SIMPLE TO USE**
- **THICKNESS 15 mm**
- **PENETRATES TO 30 mm**
- **ABLE TO MEASURE HIGH MOISTURES**
- **REAL LOW-COST METER**
- **DUAL OR SINGLE VERSIONS WITH TWO OR ONE SENSOR**
- **THIS METER HAS NO COMPETITION**

## PRODUCT HIGHLIGHTS

- applications in pulp, paper and board, textiles, felts, filters, recycled fiber, packaging papers
- suitable also for **corrugated** and **soft materials**
- unbeatable for **black papers**
- moisture of thick and thin samples, moisture content in % (abt. **30 mm penetration in common materials**)
- wide moisture range starting from about 1 %, up to about 30 % depending on BW
- fully stand-alone
- fast response, selectable digital filtering, 3 or 6 points per sec sampling, speed up to 40 pts/sec depending on configuration
- superior stability, based on radio frequency technologies (UHF)
- the price is extra competitive and the payback time is usually short
- data transfer via RS232/485, one / four analog outputs

### Data logging features

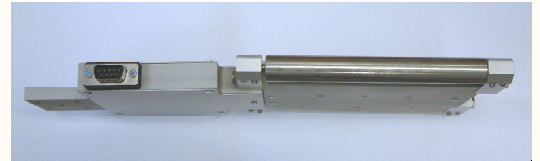
- operating distance: **contact required**
- measuring area 24 X 105 mm, **measuring depth to 30 mm**
- low noise level even at high moistures
- MK30LP has a two models according to use, DUAL for two sensors and SINGLE for one sensor operation.
- an integral skid for measuring safely over moving webs. It also ensures proper contact while measuring soft materials having a low-friction skid leaving no streaks.
- has two rollers at edges for receiving the edge loading and removing friction and heat and wear.
- measurement modes: DRY / WET for water content range for optimum results
- water content in % total
- calibration with multiple points for linearization (2 - 10 points)
- precalibrated for some basic materials
- **Note: Does not operate for materials containing significant amounts of soothe, metal particles or Titanium oxide pigment**

### Interfaces and physical properties

- dimensions 300x120x15 mm, 800 g
- IP67 enclosure for harsh environments
- the free **MK30LP** and **MK30LPsimple** programs are for data acquisition and trend display, data archiving, manipulation etc. They have a great number of features
- meter configuration can be saved, meter starts the next session like that. Temporary changes are not saved.
- physical interfaces:
  - RS232/RS485 for the PC program, 115 200 bauds (also 9 600/230 400 available)
  - one 5 Volt analog output. Optionally four analog outputs for the two moistures/temperatures

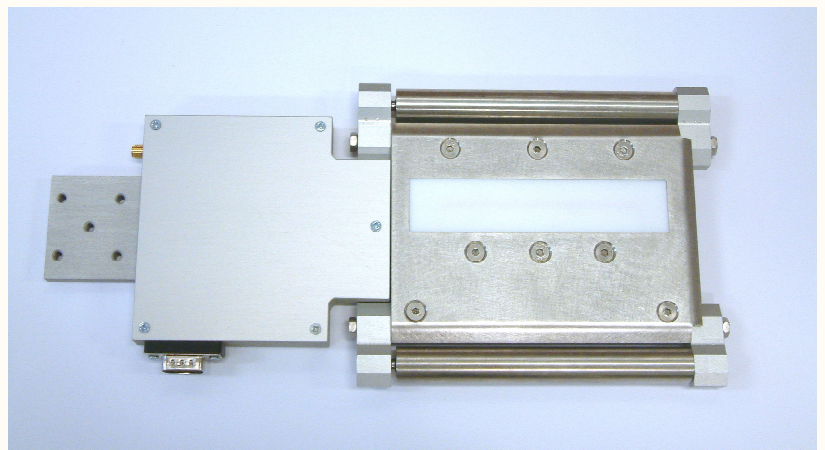
### Ambient conditions

- operating + 10 ... + 40 C
- fully temperature compensated
- IP65 case
- sensing surface can be cleaned if dirt accumulated



### Options

- Versions **MK30LP DUAL** and **SINGLE** for two or one sensors
- a carrying case **-CARMK** at a very economical price. Keeps the meter protected and ready for use.
- Moisture standard **-STDMK** for regular checking for long-term stability
- an extra connector for exposing the four analog outputs 5 Volt.
- fixed cables instead of connectors. Cable length defined by buyer.
- an extra connector for exposing the RS232 terminal connection.
- **LAN485** a communications bridge for acquiring data from up to **30 MK30LP** sensors. Can be used for other general data communications via RS485. LAN485 is able to supply 24 Volt power to each sensor
- **-CARMK** a special carrying case, water tight, shock-proof
- **-MKSTD** a polymer plate for verifying the calibration in long-term use (any stable plastic will do)





# Moisture - AK40 - On-Line Moisture Meter

The **AK40** moisture meter is a new highly economical solution to cover those points of the process which were uneconomical before.



AK40

**THE ECONOMY MODEL**

Surface moisture

- **NEW REVISIONS WITH LATEST ULTRASTABLE TECHNOLOGY**
- **FOR COST CRITICAL APPLICATIONS**
- **SIMPLE TO INSTALL AND USE**
- **INTEGRAL KEYBOARD AND DISPLAY FOR FIELD CONFIGURATION**
- **LOW WEIGHT AND SMALL SIZE**
- **A NEW ALUMINUM BOX IDENTICAL TO AK50 BOX**
- **NEW MODEL AK40GW FOR TIGHT PLACES, BOTH PORTABLE AND ON-LINE VERSIONS**
- **THESE MODELS HAVE NO DIRECT COMPETITORS**

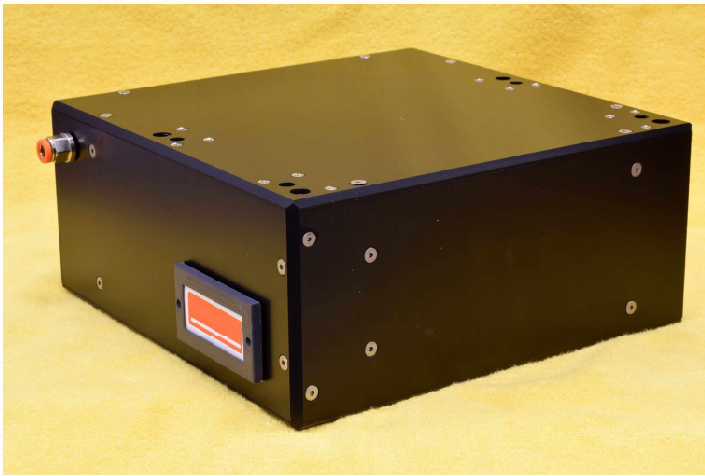
## PRODUCT HIGHLIGHTS

- applications in paper and board industry, textiles, felts, filters, minerals, sawdust, recycled fiber, waste paper
- the meter is targeted for “easy” spots of the paper and board machines. It will work at more difficult positions and at high moistures but keeping it there clean may become too challenging.
- surface moisture in thick papers, total moisture content in thin samples (abt. 150 microns penetration in paper products)
- simple to use
- fast response, selectable digital filtering, 5 points per second sampling
- superior stability, based on proven ultrastable technology by Visilab, revision S
- operating distance: 5...15 mm or more, no contact required
- measuring area 10 mm in diameter allows for profiles in small scale if put to a scanner
- IP67 enclosure for harsh environments, air purge both for the box and the skid under the meter
- integral display and a diaphragm keyboard, can be located either outside or inside the box under the hinged cover. This allows unique field operation of the meter without any other tools or PC's. It is easy to configure the meter when needed.
- large calibration table library (100 tables) with rapid switching
- calibration with multiple points for linearization
- one filter option is adjustable for exceptionally slow responses when measuring conveyors and like

- nonvolatile memory banks for holding 820 sample data series, with max 500 points per series
  - autotimer sampling, statistics for collected values
  - graphic trend display for recent history, data can be saved to a bank with a button press
  - graphics show also retrieved data curves
  - optical head is inside the box giving a good protection
  - has an infrared thermometer for obtaining the web temperature, on the display and through one analog channel
  - Flash calibration in field conditions, just know the BW and start measuring
  - automatic zeroing of the moisture reading if only the difference is important
- banks can be averaged several at a time, number of banks can be set for that
  - large moisture range starting from 0%, up to about 70%
  - a numeric display
  - a graphic display, trend curve and values, switchable with the numeric display
  - colour hue of display can be adjusted for various operating modes
  - colour hue of display can be adjusted to indicate crossing preset moisture levels (alarm feature)
  - the meter has a sleep timer. If the meter keyboard is not touched, it can be dimmed after one hour or the meter can be put to energy saving mode (LowPower mode) with no measuring. Also DIM mode is available where the display becomes dimmed after one hour but otherwise the meter continues operation
  - a marker key allows adding moisture markers while doing moisture testing on-line
- low noise level (typically < 0.03 % stddev)
  - three analog signals for DCS: Two 0..5 V signals for moisture and temperature and one 4-20 mA for the moisture
  - wireless communication via Bluetooth for up to 100 m distance in good conditions, also a 100 m PC Bluetooth adapter included with software. Now we are shipping a new RN41-based system which is a snap to install and use
  - regular RS232 at 9600 bauds is also available for PC's COM port, up to 40 meters cables
  - the no-cost **AK30**, **AK30Mini** and **ATOM** programs are full data acquisition software for trend display, data archiving, manipulation, frequency analysis, etc. **Mini** version suits small laptops with a reduced set of features. **Advanced** is an optional licensed program with plenty of features. New AK40-specific programs may be published later and they are available for everyone.
  - the optional **LAN232** unit supports up to eight moisture meters with their own power supplies connected
  - very long service interval of 200 000 hours, only the battery needs replacement after every five years if actively needed.
  - Power supply -**PS**, 24 V with a 7 m cable 1 10 - 240VAC is included (on-line models), battery charger with cables (portable model)
  - a very low power consumption max 3 W
  - dimensions 150x270x210 mm, weight 900 g, the box has four fixing screws to hold it
  - the price is better than competitive and the payback time is short if moisture quality has any value at all

# Moisture - AK50 - Process Moisture Meter

The **AK50** on-line moisture meter offers new unique features. It uses the latest infrared technology and signal processing to be an ultra-stable meter and to offer a high speed.



Surface moisture

- VERY FAST
- SMALL & COMPACT
- SUITABLE FOR BATCH PROCESSES AND PIECEWISE LINES
- ULTRASTABLE
- NEW: VERY SMALL SPOT

## APPLICATIONS:

measure moisture in fast production machines, continuous or piecewise  
board and paper products  
textiles, felts  
quality control, research studies, machine adjusting

## PRODUCT HIGHLIGHTS

- an independent, on-line surface moisture meter, designed for measurements in difficult conditions
- based on latest advanced ultrastable infrared technology by Visilab and new digital signal processing algorithms
- applications in paper and board industry, textiles, felts, papers, boards, printing, minerals, wood chips, sawdust
- **the spot size is a remarkable 10 mm in diameter** allowing for high accuracy profiler scanner work at a long distance of 205 mm
- a very high moisture sampling rate (70 Hz)
- an IR web thermometer as standard, signal can be acquired by a PC or fieldbus
- excellent for regular on-line applications (fixed or scanner)
- good independence on gloss and many surface properties
- good independence on target angle
- unmatched for troubleshooting with frequency analysis and transient measurements
- has a burst acquisition mode especially designed for piecewise or cut webs. It averages a preset number of samples and offers the result as the current moisture to all interfaces. Starting is triggered by external hardware or by a software command.
- a small size of the meter enables new scanning positions in modern paper machines, especially in press section and dryer. Available with an extended nose box for requiring conditions
- suitable for moisture range from zero to 70 % total. Calibration at field conditions against known levels or in lab.
- extremely low noise level, an additional adjustable low-pass filter for conveyors and other rapidly varying processes
- immune to external IR radiation to very high levels
- excellent immunity to external water vapor
- an optional wireless communication with up to 100 m range
- precalibrated for customer samples
- simplified assembly requirements, the meter is always installed into the same angle regarding the web
- the operating distance is 250 mm with a spot of 10 mm in diam. and with at least +8 / -8 mm play, other distances and ranges are possible at request
- a semiautomatic standardization algorithm is built-in against any external long-term drift like dirt on glasses, using an optional external moisture standard.



- a web break indicator as a flag in the digital interfaces. Also a status bit for a suspected break
- an autotimer for collecting data series into one of five memory banks for later analysis or downloading to a PC; does not burden the meter, the interval is from 10 ms to hours.
- external interfaces which can be used simultaneously, come from a single connector:
  - RS232 for PC or RS485 for local area network (LAN) 9600/115 200 bauds, PC program support
  - two voltage outputs, selectable range and scalable. Moisture and web temperature have their own channels, scalable separately
- analog outputs for moisture and web temperature, voltage range settable and scalable
- the **Advanced** software supports all AK50 features. The **Advanced** software offers a many extended features and supports simultaneous use of several meters. The **Profiler** program is similar but specialized for getting CD profiles in scanner use. It will display several curves on the display and it requires minimal external logic for sensing scan starts. The free program **AK30** is a good choice for small laptops with a small display. All software are Windows 10/8/7 compatible. Old operating systems (XP/Vista) have old versions available on our website.
- a power supply (-PS) is included with cables, connectors and a power source. Just plug in and start measuring
- a very low power consumption, air purge is used in humid or warm ( $> +35\text{ C}$ ) conditions
- an optical sensor can be easily added for sensing material batches and to start data collection in a sheet cutter or similar
- an extremely long service interval of 175 000 hours of continuous operation
- automatic adaptation to dark or absorptive surfaces, a short warm-up time of 30 s
- a very low internal noise level, six digital filter settings with varying response times (10 ms to 10 s) and passbands to match the needs in frequency analysis
- an extra filter is adjustable for exceptionally slow responses when measuring conveyors and like. It is called the process filter (a low-pass filter)
- a signal quality system which can be fully used with the Advanced program. This will help in diagnosing if the windows are dirty.
- the price is very competitive and the payback time is short
- two year's guarantee, extendable to five years with a maintenance pack
- optional accessories: moisture standard **-STD**, pressure regulator and tubing pack **-PR** for purge, a universal holding bracket **-GPH**, 4-20 mA converter modules etc.
- the optional **LAN232** unit supports up to eight moisture meters communicating with their own power supplies, connected via RS232
- refer to Accessories pages for various devices supporting this instrument

#### Options at request

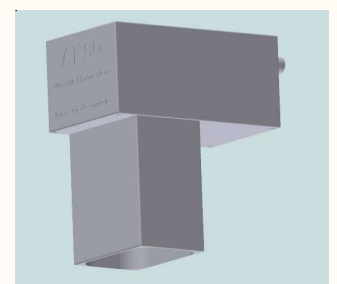
- a laser indicator is for assisting mounting the meter at the correct working distance
- Bluetooth module pair for cable replacement with a 100 m wireless link instead of RS232 cable, connected to the USB
- The nose box can be made from lighter plastic like polycarbonate
- another working distance meter-to web, different cable lengths

#### Physical properties

- dimensions 275x155x120 mm without the Vortec tube, weight 4.8 kg, nose box will add some 0.7 kg
- sturdy painted Aluminum enclosure for harsh environments, sensitive parts are IP67 protected
- Now the regular case is an Aluminum case of 270x270x120 mm IP67. The earlier box is fading away.

#### Ambient conditions

- operating  $-10 \dots +60\text{ C}$ , needs air purge if over  $+35\text{ C}$ , overheating protection turns the meter to LowPower
- optical head is inside a box giving full protection
- fully temperature compensated, both ambient and web
- the Vortec cooler will push out the air through the bottom opening. Full working of the IR thermometer is guaranteed by measuring through a separate opening. Dust and condensation will not accumulate over any windows.
- an optional nose box will keep the meter even better clean and service-free



# FrontColour10 - On-line Colour Meter



## Colour

THE WORKHORSE FOR MEASURING COLOR ON-LINE

- Used for plastics, pulp, pigments and paints, printing, papers, most solid materials
- Installed to many positions in production machines
- Simple to use, accurate readings, excellent stability
- Small size, light weight
- A self-contained system, latest DSP technology is used for signal processing
- Measurement by CIE 1964 10°  
Illuminant: A / C / D50 / D55 / D65 (default) / D75  
Colour system CIE L\*a\*b\*, CIE Lu'v' and CIE Lu\*v\*
- Gives common colour variables and TAPPI R457 brightness plus more
- One sensing head
- USB, RS232, analog outputs 5 V (4) and 4-20 mA (1)
- Conforms to CIE 15:2004 and CIE 176:2006 requirements
- Reel counter

## Main Features

- targeted for QC, testing and research, applications in pulp, paper and board industry, textiles, felts, pigments, plastics, minerals, paints and coatings
- analyzing X, Y, Z, chromaticity coordinates  $x, y, z$  - CIE  $L^*a^*b^*$ ,  $Lu^*v^*$ ,  $L^*u^*v^*$ , Yellowness J, TAPPI brightness R457, CIE whiteness W, CIE Tint, colour differences for  $L^*$ ,  $a^*$ ,  $b^*$ ,  $v'$ ,  $u^*$ ,  $v^*$ , chromaticity, hue, saturation. Also a special Primary reflectance data  $R(\lambda)$  is obtained. Geometry is  $0^\circ/45^\circ$  CIE 1964  $10^\circ$  observer, D65, A, C, D50, D55 or D75 illuminants
- uses a CCD spectrometer as a detector for analyzing the spectra, the architecture compensates against the light source and other variations. The spectrometer resolution is about 1.6 nm. A category B device
- superior stability, based on proven technology of Visilab
- several DCS interfaces for transferring the results in on-line systems
- in laboratory the FrontColour program can be used via USB/RS232/Bluetooth, all data for archival, statistics and reporting
- spot size 8.75 mm in diameter allows small-scale measurements, size dictated by standards and distance
- LED light source with wideband excitation of 400 - 760 nm and a separate UV excitation 390 - 420 nm is user adjustable
- operating distance: 50 mm one headed observation
- the FrontColour program allows continuous data acquisition on-line with various displays and archiving, diagnostics, statistics etc. All meter features and calibration procedures are made via the PC program
- extremely long service interval - designed to run 24/7
- runs automatically without any computers. PC can be used for data acquisition and configuration. The operating mode (illuminator etc.) is changed with the PC

## Data logging features

- all DCS analog interfaces are updated once per sec minimum, raw speed 2 / sec
- external reel number counter switch input with automatic counter increment
- data acquisition speed 2 points /s minimum for all variables, output 2 points/s to interfaces

## Interfaces and physical properties

- **analog outputs** 0..5 V (4) for any output variable, 4-20 mA (1), both scalable
- **USB** for a PC directly in the box
- regular **RS232** via cable at 9600 (max. 40 m) or 115200 (max. 5 m) via RS232/USB converter
- an **input** for incrementing the reel counter (TTL type closing switch)
- operating voltage 24 V 15 W max
- dimensions 120x270x270 mm, weight 3.5 kg
- IP67 enclosure for harsh environments
- power supply unit for 110 - 240 VAC mains is included. It has connectors for DCS interfaces
- the **Frontcolour** is a licensed program with plenty of features, belongs to the instrument, operating in Windows 10/8/7 32/64 bit versions. It has graphic displays for incoming data, a big number display, recipe system for optimizing small colour differences etc.
- Mounting by four holes on the top face, M10 or M8
- Observation window near one end of the bottom plate

## Ambient conditions

- operating +5 ... +60 C with air purge
- overheating protection turns the meter to LowPower
- fully temperature compensated
- IP67 case, purge air to both case and window / skid
- optical windows can be cleaned if water condensation or dust, air purge used for keeping it clean

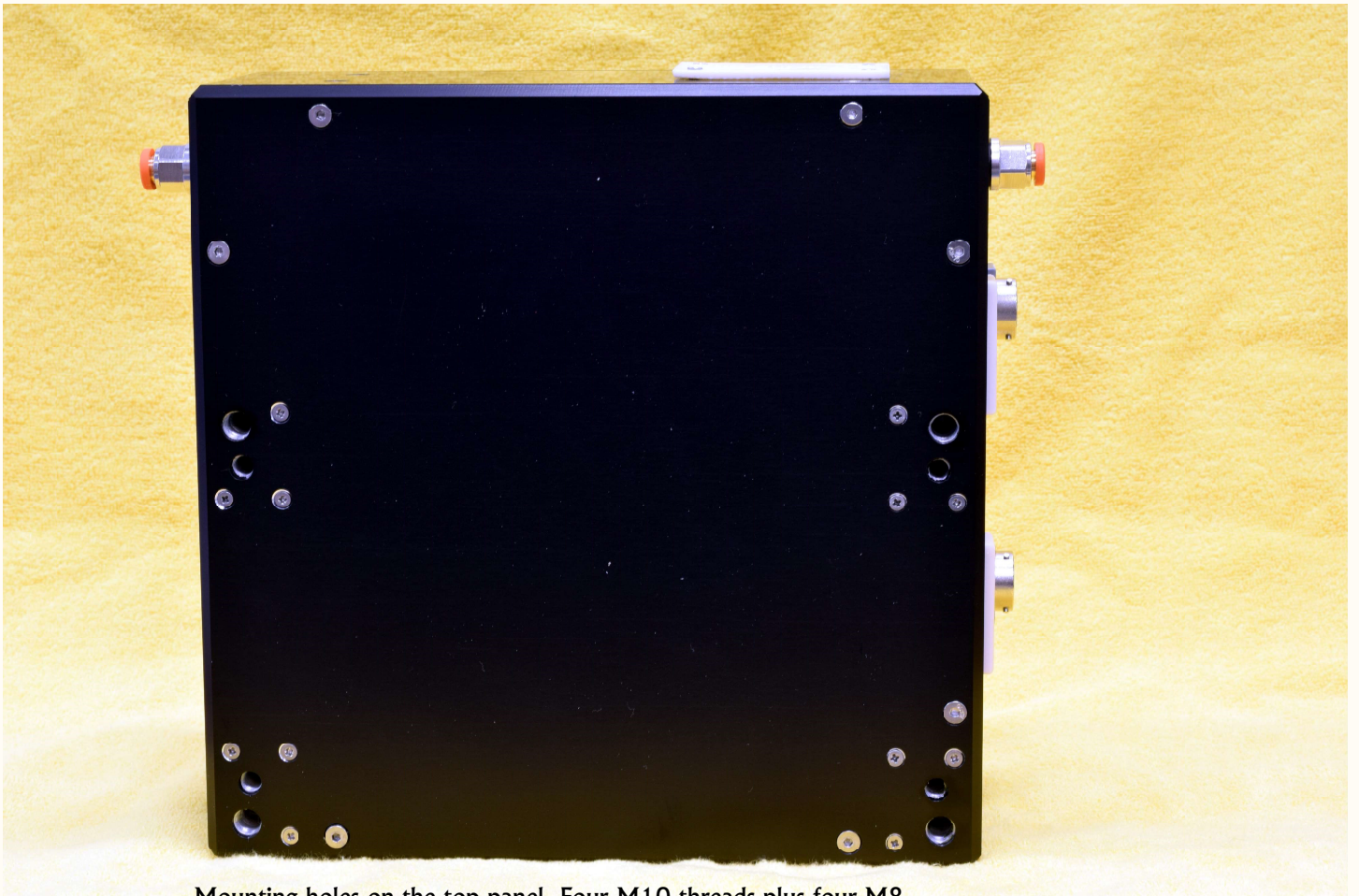
## Optional accessories

- wireless communication via 100 meter Bluetooth, the dongle for the PC included
- USB extension lead 3 m
- Spectralon reflectance standard, NIST traceable
- colour standard set, NIST traceable
- wavelength calibration light source
- laser pointers for aiding in accurate positioning while installing in requiring conditions
- a dust cover for more difficult conditions
- holders are available for flat samples, reflectance standards, colour tiles, wavelength calibrators. They facilitate checkup and laboratory operations a lot





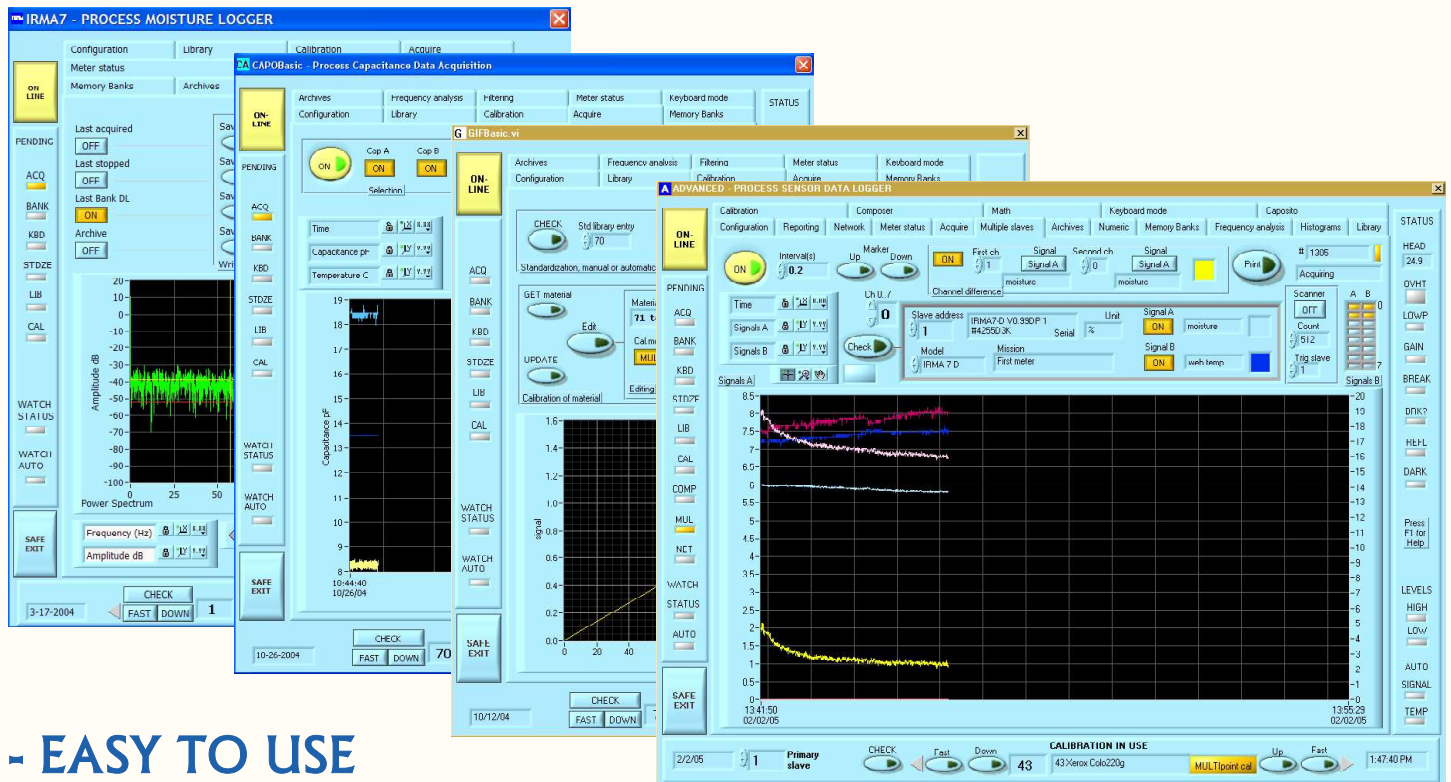
FrontColour 10 back panel for connections to power supply, communications, analog signals and USB. Top right corner has a quick connect for air purge



Mounting holes on the top panel. Four M10 threads plus four M8.

# Software - Data Logging for Process Sensors

The **Mini**, **Basic** and **Advanced** software represent latest software technology. They apply smart multitasking and signal processing to obtain the maximum amount of useful data out of your process sensors.



- EASY TO USE
- EXCELLENT GRAPHICS
- COMPLETE ARCHIVING
- SCANNER SUPPORT
- SPECIAL VERSIONS AVAILABLE

## PRODUCT HIGHLIGHTS

- data logging software using the PC's asynchronous serial port and the **IRMA-7** packet protocol
- acquires sensor signals for display, further processing and archiving. Web temperature, head temperature, extra temperature and expansion module signal are available depending on model and accessories
- programs support all **AK30/AK40/AK50/MK30R** moisture meter models including all obsolete models.
- very easy to use, just press a few buttons and complete data acquisition routines with automatic saving is started with continuous data display with automatic scaling
- multitasking program structure. Most tasks and operations can be performed at the same time
- all of meter's features can be used efficiently, including the memory banks, calibration tables, autotimers and high measuring speed
- sampling interval adjustable from 0.01 s to 32 000 s for trend displays
- archiving of all data to spreadsheet format, also Excel, Datalog, Active-X and LVM file formats are available
- frequency analysis for current incoming data and for archived and downloaded bank data. This is a very useful tool for finding moisture or other signal oscillations and for identifying their causes. It now contains a cylinder diameter/felt length library to save the **PM** features for later diagnostics



- data files can be retrieved and displayed with statistics information
- reporting to printer with high quality graphics. HTML report files can be generated.
- status indicators for meter overheating, web break and suspected break are useful for daily quality control work
- indicators for too reflective or too dark surfaces, indicators for crossed high and low levels
- calibration and meter standardization routines
- support for simple scanner data acquisition in Acquire and Multiple slaves tasks. Requires an external trigger for each scan start.
- can be safely left running for months, data is automatically saved into date-time coded files
- calibration library and single material manipulation with graphical display of each entry
- fast advanced signal processing in filtering, frequency analysis and displays
- the **Profiler** program is specialized for scanner operation but can be used successfully for other moisture signal acquisition tasks. The same license as the **Advanced** is applied.
- the **Advanced** program is licensed with an economical single-time payment. It supports the use of several meters simultaneously and has a number of additional features not found in the **AK30** program, like Composer expert system, channel difference calculation in real-time and as a postoperation too, Mathematics page, Numeric display page, postfiltering (three options) of archive files, global commands and Network operations. Autostart feature makes it possible to run it in unmanned systems for data acquisition. Other

The image displays several screenshots of the VISILAB software interface, which is used for moisture sensor data acquisition and processing. The main window, titled 'IRMA7 - PROCESS MOISTURE LOGGER', features a control panel on the left with buttons for 'ON LINE', 'ACQ', 'BANK', 'KBD', 'STOZE', 'LIB', 'CAL', 'WATCH STATUS', 'WATCH AUTO', 'SAFE EXIT', and 'CHECK'. The central area contains a large plot showing moisture percentage over time, with a table of statistics (Average, Std dev, Min, Max) for seven channels. A 'CALIBRATION IN USE' dialog box is visible at the bottom, showing a calibration curve and parameters like '41' and '41.4CC 1000'. Other screenshots show a 'VISILAB SIGNAL TECHNOLOGIES' logo, a 'Moisture' display, and a 'MULTIPLE MOISTURE SENSOR DATA LOGGER' window with various sensor settings and a multi-axis plot. The bottom left corner features the VISILAB SIGNAL TECHNOLOGIES logo, and the page number '19' is centered at the bottom.



features are identical to those in **Simple** programs except the advanced program has a wider graphical display. Advanced has now a special feature called Automatic Fine Tune for automatically adjusting a calibration. The Advanced software fully supports all old sensors and meters manufactured by Visilab. The latest version has a meter diagnostic section for checking the meter and diagnosing if something is wrong. The license fee covers the Moisture Profiler program too and other available licensed software not mentioned here. The Colour program has its own small fee.

- the **AK30Mini** program is a minimized version of **AK30** having a smaller subset of features. The **ATOM** program is the simplest program targeted only for getting the moisture profiles from the meter.
- all programs can be upgraded via internet with no cost, just download a ZIP file, open it and install it.
- all programs can work with LAN232 bridging unit transparently.
- user's guide in English
- Most software support the three data transmission speeds: **NORMAL** 9600, **HIGH SPEED** 38400 and **TOP SPEED** 115 200 bauds. **AK30** and **AK30Mini** have speeds of 9600 and 115200 bauds (**TOP SPEED**). They all immediately support the operation through a Bluetooth COM port in the PC. We offer Bluetooth modules for all meter and sensor models for both ends of the link. Refer to the accessories page. Post-assembly of Bluetooth is very easy to all meter models. The **MK30LP** software have speeds 9 600/1 15 200/230 400 bauds.
- All software operate in Windows 11 / 10 / 8 / 7 (\*) and future versions.
- **ATLINK** and **ATLINKMini** are for using various tailored systems delivered by Visilab and several other products whose embedded software Visilab has designed. These programs act as ANSI terminals for easy text-based management and data transmission. They can be used for many other purposes too.
- We can offer again the French-made **Colour** program with a separate license. It can be used successfully with all **AK30** and **AK40** meters (English and French versions). The license cost is low.
- The new program is **ATOM**. It is designed for retrieving memory banks from the portable meters
- the **MK30LP** and **MK30LP Simple** programs are for the model **MK30LP** (Simple having a smaller subset of features)
- The **Moisture** program is available as a small fee. It is designed for **AK30/AK40** meters but will work for **AK50** too.
- The programs **Moisture** and **AK30** and **AK30Mini** have **French language** versions available

## Cross reference table for applicability of each PC program with various products

Program	Product/Model			
	AK30/AK40/MK30R	AK50	MK30LP	FC10
Advanced	perfect	perfect	acquisition only	not suitable
Profiler	perfect	perfect	acquisition only	not suitable
AK30	perfect	not perfect	acquisition only	not suitable
AK30Mini	perfect	not perfect	acquisition only	not suitable
ATOM	perfect	not perfect	acquisition only	not suitable
MK30LP	not suitable	not suitable	perfect	not suitable
MK30LPsimple	not suitable	not suitable	perfect	not suitable
FrontColour FrontColourConfig	not suitable	not suitable	not suitable	perfect

Using an incorrect program for acquiring data is not dangerous. Some less important features are hidden and signals have incorrect labels. Some program have the Keyboard mode and thus all lower level product features and configurations are available.

Notes: The **FrontColour 10** colour meter has its own software which for natural reasons is not compatible with the moisture meters.

The support for Profibus DP has been ended. Old systems delivered are serviced and maintained in this respect.

The **IRMA7Basic** program is now obsolete.

The models **FrontColour 5** and **MK30 Compact** are now obsolete and replaced by better performing models **FrontColour 10** and **MK30R**.

For those who insist on having the high-speed **FrontColour 5** for **Brightness** measurement, we can manufacture it.

# Accessories - for Process Sensors

The following devices are useful for the instruments displayed in this publication. We do have other accessories available in addition to these.

The **LAN485** unit for creating a local area network based on the regular RS485, supports up to 30 sensors simultaneously, at 9600 / 115 200 / 230 400 bauds. It also supplies 24 Volt power to each sensor.

The **LAN232** unit for creating a local area network based on the regular serial port RS232, supports up to eight sensors simultaneously at 9600 or 115 200 bauds



For various products:



A power supply unit **-PS**. This supply is used for all FrontColour, AK50 and AK40 models. It has a connector for a standard optical sensor for installing a triggering system. It has two voltage output connectors. A DIN rail mounting kit is included.

**BTUSBRN41**, wireless data transmission links to all meters and sensors with a 100 m range.

